

Darius Milhaud  
Second Symphonic Suite, Protée

1<sup>ers</sup> VIOLONS

I. Ouverture

Modéré

10 1 4 Fl.

1<sup>ers</sup> Violons

*mp*

1 2 3 4 5

*p* *p* *p* *p* *p*

3

*p*

*mf*

4

*f*

2 8

*ppp* (tranquille)

5 8

3 6 3

*mp*

Milhaud — 2nd Symphonic Suite

1<sup>ers</sup> VIOLONS

The musical score for the first violins consists of several systems. The first system (measures 7-8) is marked *p* and *mf*. The second system (measures 9-10) includes a piano accompaniment part labeled *DIV.* and *ff*. The third system (measures 11-12) is marked *mp* and *ff*. The *UNIS* section begins at measure 10. The score includes various musical notations such as dynamics (*p*, *mf*, *ff*, *mp*), articulation (accents, slurs), and performance instructions (*divisi*, *unison*). Measure numbers 7, 8, 9, 10, 11, and 12 are clearly marked.

1<sup>ers</sup> VIOLONS

Musical score for the first violins, measures 11-15. The score is written on five staves. The first two staves are a grand staff with treble and bass clefs. The third, fourth, and fifth staves are single staves with treble clefs. Measure 11 starts with a dynamic marking of *f*. Measure 12 has a dynamic marking of *ff*. Measure 13 has a boxed measure number **13**. Measure 14 has a boxed measure number **14**. Measure 15 has a boxed measure number **15**. The score includes various musical notations such as slurs, ties, and triplets. The word *UNIS* is written below the third staff. The word *ppp* is written below the fourth staff. The word *Cédez* is written above the fifth staff, and *Mouvt* is written above the sixth staff. A number **6** is written in a box below the fifth staff.

II. Prélude et Fugue

Musical score for the first violins, measures 16-17. The score is written on four staves. The first staff is a single staff with a treble clef and a 3/4 time signature. It starts with the tempo marking *Très animé* and the instruction *pizz*. The dynamic marking *p* is written below the first staff. The second staff is a single staff with a treble clef, numbered 1 through 8. The third staff is a single staff with a treble clef, numbered 9 through 8. It includes the instruction *arco* and the dynamic marking *mf*. The fourth staff is a single staff with a treble clef, numbered 17 through 5. It has a boxed measure number **17** at the beginning.

Milhaud — 2nd Symphonic Suite

4

1<sup>ers</sup> VIOLONS

Musical score for the 1st Violins, measures 18 through 30. The score is written on ten staves. Measure 18 begins with a dynamic marking of *f* and a fermata over the first two notes. Measure 19 starts with a dynamic marking of *ff*. Measure 20 has a dynamic marking of *mf*. Measure 21 has a dynamic marking of *f*. Measure 22 has a dynamic marking of *mp*. Measure 23 contains a fermata for 9 measures. Measure 24 contains a fermata for 10 measures. Measure 25 contains a fermata for 10 measures. Measure 26 contains a fermata for 1 measure. Measure 27 has a dynamic marking of *ff*. Measure 28 contains a fermata for 8 measures. Measure 29 contains a fermata for 10 measures. Measure 30 contains a fermata for 4 measures. The score includes various musical notations such as slurs, accents, and dynamic markings. The key signature is one sharp (F#). The time signature is not explicitly shown but appears to be 4/4. The score concludes with the instruction "1<sup>ers</sup> Viol." and a dynamic marking of *ff*.

18 2 *f* 19 *ff* 20 *mf* 21 *f* 22 *mp* 23 9 10 24 10 25 10 26 1 1<sup>ere</sup>-Tromp. 27 *ff* 28 8 29 10 4 *Très long* *velles C.B.* 30 1<sup>ers</sup> Viol. *ff*

1<sup>ers</sup> VIOLONS

Musical staff with treble clef, key signature of one sharp (F#), and a 3-measure triplet of eighth notes.

Musical staff with treble clef, key signature of one sharp (F#), and a 3-measure triplet of eighth notes.

**31**

Musical staff with treble clef, key signature of one sharp (F#), and a 3-measure triplet of eighth notes.

**32**

Musical staff with treble clef, key signature of one sharp (F#), and a 3-measure triplet of eighth notes.

UNIS

Musical staff with treble clef, key signature of one sharp (F#), and a 3-measure triplet of eighth notes.

Animez **33** 2 Altos 2<sup>ds</sup> Vons

Musical staff with treble clef, key signature of one sharp (F#), and a 3-measure triplet of eighth notes.

DIV. en 3

Musical staff with treble clef, key signature of one sharp (F#), and a 3-measure triplet of eighth notes.

1<sup>ers</sup> VIOLONS

III. Pastorale

*Souple et animé* 10 **34** 10 **35** 5 Cors Htb. Fl.  
8 bassa

**36** 1<sup>ers</sup> Violons *pp*

**37** *p*

**38** *mf* *f* *p*

**39** *mp* *mf*

**40** *f*

**41** *ff*

1<sup>ers</sup> VIOLONS

ppp

42

2 3 43 1

f

3

ff

3 pizz 4 Altos 45

f ff

Cédez 1<sup>ers</sup> Violons arco p

46

pp

1 sur le chevalet 47 2

mf

son ordinaire

f

48 2

Milhaud — 2nd Symphonic Suite

1<sup>ers</sup> VIOLONS

Musical score for 1st Violins, measures 49-53. The score consists of six staves of music. Measure 49 is marked with a box containing the number 49. Measure 50 is marked with a box containing the number 50. Measure 51 is marked with a box containing the number 51. Measure 52 is marked with a box containing the number 52. Measure 53 is marked with a box containing the number 53. The music features various dynamics including *p* and *pp*, and includes a *ppp* marking with a hairpin symbol. The notation includes eighth notes, quarter notes, and half notes, with some notes beamed together and slurs.

IV. Nocturne

Souple et modéré

sourd.

Musical score for Nocturne, measures 54-56. The score consists of three staves of music. Measure 54 is marked with a box containing the number 54. Measure 55 is marked with a box containing the number 55. Measure 56 is marked with a box containing the number 56. The music is in 5/8 time and features various dynamics including *p* and *pp*. The notation includes eighth notes, quarter notes, and half notes, with some notes beamed together and slurs. There are also rests and fermatas. The score includes markings for *Htb.* and *1<sup>ers</sup> Vols Fl.*.



1<sup>ers</sup> VIOLONS

This page contains the musical score for the first violins, measures 57 through 60. The score is written on ten staves. Measure 57 is marked with a box containing the number 57. Measure 58 is marked with a box containing the number 58. Measure 59 is marked with a box containing the number 59. Measure 60 is marked with a box containing the number 60. The score includes various musical notations such as notes, rests, slurs, and dynamic markings. The dynamic marking *mp* (mezzo-piano) is used in measures 58 and 59. The instruction *Cédez au Mouvt* (Cede to the movement) is written above the staff in measure 58. The instruction *rall. au Mouvt* (rallentando to the movement) is written above the staff in measure 59. The instruction *sans ralentir* (without slowing down) is written below the staff in measure 60. The key signature is one sharp (F#) and the time signature is 4/4. The score is arranged in a system of ten staves, with measures 57-60 spanning the entire page.

1<sup>ers</sup> VIOLONS

V. Final

*Vif*  
*mf*

61 1

*f*

62

*mp*

63 64 1

*p*

1 2 3 4

5 6 65 7 8 9 10 11 12

1<sup>ers</sup> VIOLONS

Musical staff with measures 13-19. Measure 13 starts with a treble clef and a key signature of one sharp (F#). Measures 14-19 contain rests. Measure numbers 13, 14, 15, 16, 17, 18, and 19 are indicated below the staff. Boxed measure numbers 66 and 67 are present above the staff.

Musical staff starting at measure 20. It begins with a treble clef, a key signature of one sharp, and a 6/4 time signature. The dynamic marking *f* is present. The staff contains a melodic line with slurs and accents.

Musical staff starting at measure 21. It begins with a treble clef and a key signature of one sharp. Boxed measure number 68 is above the staff. The staff contains a melodic line with slurs and accents.

Musical staff starting at measure 22. It begins with a treble clef and a key signature of one sharp. The dynamic marking *ff* is present. The staff contains a melodic line with slurs and accents.

Musical staff starting at measure 23. It begins with a treble clef and a key signature of one sharp. The instruction "Un peu moins vif" is written above the staff. The staff contains a melodic line with slurs and accents.

Piano accompaniment for measures 24-26. It consists of two staves (treble and bass clef). Measure numbers 69 and 70 are boxed above the staff. Dynamics include *p* and *pp*. The instruction "DIV. 1" is written on the left. The piano part features chords and slurs.

Musical staff starting at measure 27. It begins with a treble clef and a key signature of one sharp. The instruction "UNIS" is written above the staff. The dynamic marking *ff* is present. The instruction "pizz Animez" is written above the staff. Boxed measure number 71 is above the staff. The staff contains a melodic line with slurs and accents.

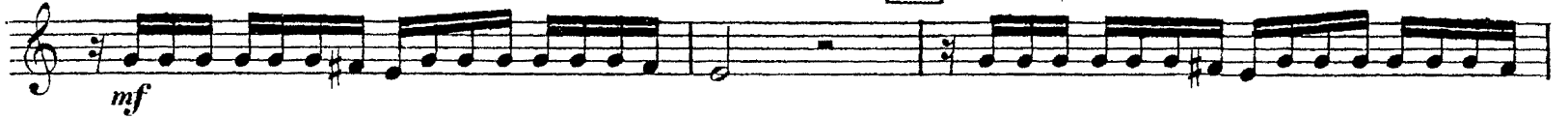
Musical staff starting at measure 28. It begins with a treble clef and a key signature of one sharp. The staff contains a melodic line with slurs and accents.

Piano accompaniment for measures 29-33. It consists of three staves (treble and bass clef). Measure numbers 72 and 73 are boxed above the staff. Dynamics include *ff* and *mp*. The instruction "DIV. en 3" is written on the left. The instruction "arco" is written above the first staff. The instruction "Tromp (bouchée)" is written above the second staff. The instruction "Cédez" is written above the third staff. The piano part features chords and slurs.

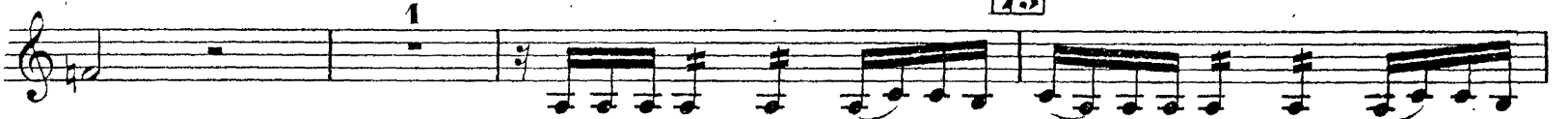
1<sup>ERS</sup> VIOLONS

au Mouvt  
très vif

74



75

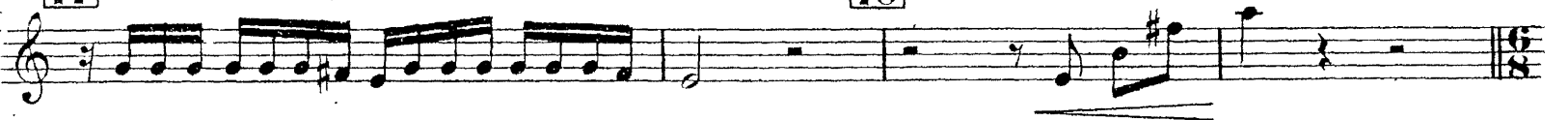


76



77

78



Très vif

*ff*



Darius Milhaud  
Second Symphonic Suite, Protée

2<sup>ds</sup> VIOLONS

I. Ouverture

Modéré

10 1 4 Fl.

2<sup>ds</sup> Violons

1 2 3 4 5

*mp*

1 2 3 4

*p*

3

5

*p*

4

*mf*

*f*

*ff*

5

*ppp*

3

2ds VIOLONS

6

tr *mp*

7

DIV. *pp*

8

*mf*

DIV. en 3

*f*

9

*ff*

10

UNIS *ff* *p*

2<sup>ds</sup> VIOLONS

Musical score for 2nd Violins, measures 11-15. The score is written on five staves. Measure 11 starts with a treble clef, a key signature of one flat, and a dynamic marking of *mf*. Measure 12 has a dynamic marking of *p*. Measure 13 has a dynamic marking of *ff*. Measure 14 has a dynamic marking of *ff*. Measure 15 has a dynamic marking of *ppp*. The score includes various musical notations such as slurs, accents, and triplets. Measure 15 includes the instruction "Cédez Mouvt" above the staff and "D.V." and "6" below the staff.

II. Prélude et Fugue

Musical score for "Prélude et Fugue", measures 16-17. The score is written on three staves. Measure 16 starts with a treble clef, a 3/4 time signature, and a dynamic marking of *p*. The instruction "Très animé pizz" is written above the staff. Measure 17 has a dynamic marking of *mf*. The score includes various musical notations such as slurs, accents, and fingerings.

2<sup>ds</sup> VIOLONS

18 <sup>2</sup> arco *f*

19 *ff*

20 *mf*

21 *f*

22 *mp* pizz 9

23 10 24 10 25 10 26 4 4<sup>me</sup> Tromp.

27 8

28 10 29 4 *velles C.B.* *très long ff*

30 2<sup>ds</sup> Violons arco *ff*

Detailed description: This page contains the musical score for the 2nd Violins of Milhaud's 2nd Symphonic Suite, covering measures 18 to 30. The score is written on ten staves. Measures 18-22 feature melodic lines with various dynamics including *f*, *ff*, *mf*, and *mp*. Measure 22 includes a *pizz* (pizzicato) instruction. Measures 23-26 are marked with measure numbers 10, 10, 10, and 4 respectively, and measure 26 includes the instruction "4<sup>me</sup> Tromp.". Measures 27-29 are marked with measure numbers 8, 10, and 4. Measure 29 includes the instruction "velles C.B." and "très long ff". Measure 30 is marked with measure number 10 and includes the instruction "2<sup>ds</sup> Violons arco" and "ff". The score includes various musical notations such as slurs, accents, and dynamic markings.



2<sup>ds</sup> VIOLONS

31

V

DIV.

3

32

UNIS

*f*

Animez jusqu' à la fin

pizz.

3

3

33

arco

*f*

arco

*f*

arco

*f*

DIV. en 3

*ff*

*ff*

*ff*

2<sup>ds</sup> VIOLONS

III. Pastorale

Souple et animé

34 10 35 5 Cors

Htb. Fl. 36 2<sup>ds</sup> Vols pp

37 p

38 mf f

39 mp mf

40 ff

Detailed description: This page contains the musical score for the 2nd Violins part of the third movement, 'Pastorale', from Milhaud's 2nd Symphonic Suite. The score is written in treble clef with a key signature of one sharp (F#) and a 3/8 time signature. It begins with the tempo marking 'Souple et animé'. The first staff shows measures 34, 35, and 36, with measure numbers 10, 10, and 5 respectively. The second staff starts at measure 36 and includes the instruction 'Htb. Fl.' and '2<sup>ds</sup> Vols'. The score features various dynamics including *pp*, *p*, *mf*, *f*, *mp*, and *ff*. There are also markings for 'Cors' and 'tr.' (trills). The music consists of several staves of melodic lines with various rhythmic patterns and articulations.

2<sup>ds</sup> VIOLONS

41

*mf* *pp*

42

43

44

45

2<sup>ds</sup> Violons **Mouvt du début**  
avec le bois de l'archet  
arco

46

47

2

48

2<sup>ds</sup> VIOLONS

Musical score for 2nd Violins, measures 49-53. The score consists of seven staves of music. Measure 49 is marked with a box containing the number 49. Measure 50 is marked with a box containing the number 50. Measure 51 is marked with a box containing the number 51. Measure 52 is marked with a box containing the number 52. Measure 53 is marked with a box containing the number 53. The music features various dynamics including *p* and *pp*, and includes slurs and accents. A double bar line is present at the end of measure 53.

IV. Nocturne

Musical score for Nocturne, measures 54-55. The score consists of three staves of music. Measure 54 is marked with a box containing the number 54. Measure 55 is marked with a box containing the number 55. The tempo is marked "Souple et modéré" and the instruction "sourdine 2" is present. The first staff is for the Horn (Htb.) and the second staff is for the 1st Violins (1<sup>ers</sup> Vions) and 2nd Violins (2<sup>ds</sup> Vions). The music includes dynamics like *p* and *pizz*, and features triplets and slurs. A double bar line is present at the end of measure 55.

2<sup>ds</sup> VIOLONS

1 **56** 2 arco *p*

**57** *tr*

*tr* Cédez au Mouvt

**58** *mp*

*rall*

**59** au Mouvt *mp*

**60**

*sans ralentir*

0

Detailed description: This page of a musical score for two violins contains measures 56 through 60. The music is written in treble clef with a key signature of one sharp (F#). Measure 56 begins with a first ending bracket labeled '1' and a second ending bracket labeled '2', with the instruction 'arco' and a dynamic marking of 'p'. Measure 57 features a trill marked 'tr'. Measure 58 has a dynamic marking of 'mp'. Measure 59 includes the instruction 'au Mouvt' and a dynamic marking of 'mp'. Measure 60 is marked 'rall' and ends with a fermata over a whole note. The final measure of the page is marked 'sans ralentir' and includes a natural sign '0' above the staff.

2ds VIOLONS

V. Final

*Vif*  
*mf*

61

62

63

64

65

66

67

*f*

*mp*

*p*

2<sup>ds</sup> VIOLONS

Musical score for 2nd Violins, measures 1-11. The music is in 2/4 time with a key signature of one sharp (F#). It features a series of eighth-note patterns with slurs and accents. Measure numbers 1, 2, 3, 4, 5, 6, 7, 8, 9, 10, and 11 are indicated. Dynamics include *f* and *ff*. Fingering numbers 7 and 5 are shown above notes.

Musical score for 2nd Violins, measures 12-15. The music continues with eighth-note patterns. Measure numbers 12, 13, 14, and 15 are indicated. Dynamics include *ff*.

Musical score for 2nd Violins, measures 16-17. Measure numbers 16 and 17 are indicated. The tempo marking *Un peu moins vif* is present above the staff.

Musical score for 2nd Violins, measures 18-20. Measure numbers 18, 19, and 20 are indicated. Dynamics include *mp* and *pp*. Boxed measure numbers 69 and 70 are present.

Musical score for 2nd Violins, measures 21-22. Measure numbers 21 and 22 are indicated. Dynamics include *ff*. The instruction *Animez* is written above the staff.

Musical score for 2nd Violins, measures 23-24. Measure numbers 23 and 24 are indicated. Dynamics include *ff*. Boxed measure number 71 is present.

Musical score for 2nd Violins, measures 25-27. Measure numbers 25, 26, and 27 are indicated. Dynamics include *ff*. The instruction *arco* is written above the staff. Boxed measure number 72 is present.

DIV. en 3

2<sup>ds</sup> VIOLONS

**73** UNIS 6 Tromp. *bouché* Cédez *au Mouvt* 2<sup>ds</sup> Violons  
*mp* *mf*